



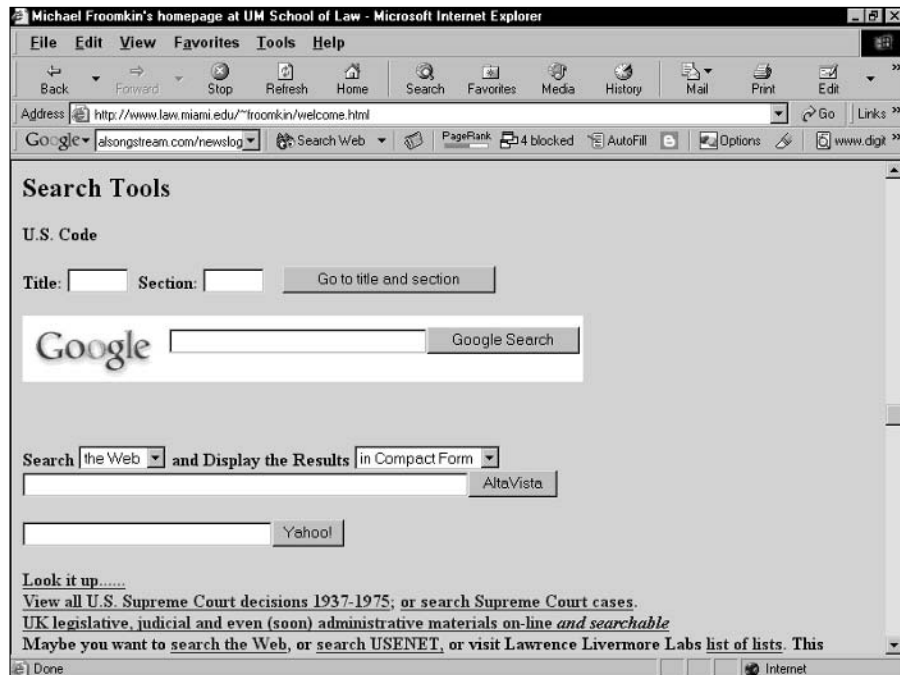
The colors you use in customizations can be determined by hexadecimal values understood in HTML. You're not limited to black, blue, red, and other basic hues. If you want to exactly match backgrounds and other elements in your pages, look in your HTML to find the hexadecimal values you need, and enter them in the customization fields.

Figure 5-11 illustrates what happens without a fully integrated color scheme. The result is hardly hideous, but it looks thrown together rather than blended in. (And here, as in many sites, the Google-only guideline is ignored.)

By contrast, Figure 5-12 shows a nicely integrated search box. Note the custom Search button, replacing Google's default button.



You can't use the Site Search feature as an enterprise solution, tempting though it might be. Google searches only public Web sites, not corporate intranets.



**Figure 5-11:**  
A lack of customization results in a rough look.